



KRB
1058 Cool Creek Road
Wrightsville, PA 17368
Phone: 717-252-3667
Fax: 717-252-9247
www.krbmachinery.com
info@krbmachinery.com



VOLUME FIVE - JULY 2010

REBAR INDUSTRY NEWS



Upcoming Events

11.22.10 - 11.25.10
Big 5 Show
Dubai, UAE
Booth 3A106

01.18.11 - 01.21.11
World of Concrete
Las Vegas, Nevada
Booth N2603

01.27.11 - 01.29.11
MCPX Show
Charlotte, North Carolina
Charlotte Convention Center

02.08.11 - 02.11.11
BCIndia
Mumbai, India

Stimpson - continued

"There are good people here. I also like that it's a local, American manufacturer making a quality product here in the USA," responds Stimpson.

When Dave is not manufacturing the best shearlines in the world, he spends his time at home with his family enjoying cook-outs and trips to the park. His hands are full with his twin daughters, fiery red heads that are 3 years old.

"They are already getting bossy," Dave smiles. "The other day I took them over to the park where they love to play on the tire swing. There were kids on the swing already and some waiting in line. My daughter started giving the other kids the business, letting them know she was ready to swing, NOW! I had to go over to her and explain that she had to wait her turn," he laughs.

To find out more about KRB and the people that manufacture the best rebar cutting, bending and material handling solutions in the world visit www.krbmachinery.com.

EMPLOYEE SPOTLIGHT

Dave Stimpson - Fabricator

Dave Stimpson has been building robust KRB Equipment since 1996. His 14 years of experience in fabricating is one reason why KRB makes the best shearlines in the world. Each KRB Shearline is crafted by experienced fabricating professionals like Dave to ensure superior quality and exact tolerances are maintained with every KRB system built.

"We take special care in making sure that every weld has a nice smooth bead with the proper penetration," explains Stimpson. "We have very experienced fabricators here at KRB. That is critical in knowing how to set up the machines for various applications."

When asked what he likes about working at KRB Dave says, "I have worked other places and KRB is different. There is a lot of trust between management and production. The company really listens to our ideas and respects our opinions when it comes to the fabrication process. They rely on our experience and I like that. Sometimes an idea sounds good on paper but when it's executed it's a different story. We work as a team to make sure the product is the best it can be." (continued back cover)



CUSTOMER SPOTLIGHT



KRB Shearlines are being used to construct the Princess Noura Bint Abdulrahman University for Woman (PNU), in Riyadh.

Saudi Oger is Building the Future of Education in Saudi Arabia

Saudi Oger, www.saudioger.com has become one of the leading Construction, Facilities Management Service Provider and Infrastructure Project Development companies in The Kingdom of Saudi Arabia and the region.

In a relatively short period of time, Saudi Oger Ltd. has grown into a multi-company, multi-divisional organization with subsidiaries and affiliates in the Kingdom of Saudi Arabia and abroad.

Recently Saudi Oger, has been involved in the construction of the Princess Noura Bint Abdulrahman University for Woman (PNU), in Riyadh. The university is expected to cover 8 million square meters and is located on King Khalid International Airport Road north of Riyadh. The total built up area is around 3 million square meters. The university will include administration buildings, 13 facilities, a 700-bed student hospital, laboratories, research centers, and a residential area that includes accommodations for students and staff. The capacity of the university is around 26,000 students. Saudi Oger is using KRB Shearlines and double benders for the cutting and steel bending on the project. (continued inside)



1058 Cool Creek Road
Wrightsville, PA 17368
United States

Crushed, Returned Concrete as Aggregates for New Concrete

Every year an average of 5% of the estimated 455 million cubic yards of ready mixed concrete produced in the United States is returned to the concrete plant.

The returned concrete in the truck can be handled in several different ways. A common approach is to discharge the returned concrete at a location in the concrete plant for processing. The hardened, discharged concrete can be subsequently crushed and the coarser material can be reused as base for pavements or fill for other construction.

Demolishing old concrete structures, crushing the concrete and using the crushed materials as aggregates is not new and has been researched to some extent. This material is generally referred to as "recycled concrete aggregates" (RCA). However, RCA is different from CCA, as construction debris tends to have a high level of contamination (rebar, oils, deicing salts and other building components). CCA, on the other hand, is prepared from concrete that has never been in service and thus is likely to contain much lower levels of contamination.

Using recycled concrete aggregates can help the ready mixed concrete industry save an estimated \$300 million per year in operating costs.

In addition, it will reduce the amount of landfill space used by as much as 845 10-foot high football fields every year. The use of CCA also could help earn points under systems like the Leadership in Energy and Environmental

Design (LEED) for certifying building projects for sustainable construction.



Saudi Oger - continued

The cut and bend facility that supplies the project sits outdoors where it is hammered by the elements. The extreme heat and exposure to the sun makes it critical to have robust, reliable equipment to perform day in and day out.



Two KRB Standard Shearlines with bar transfers to double benders operate on the university project site.

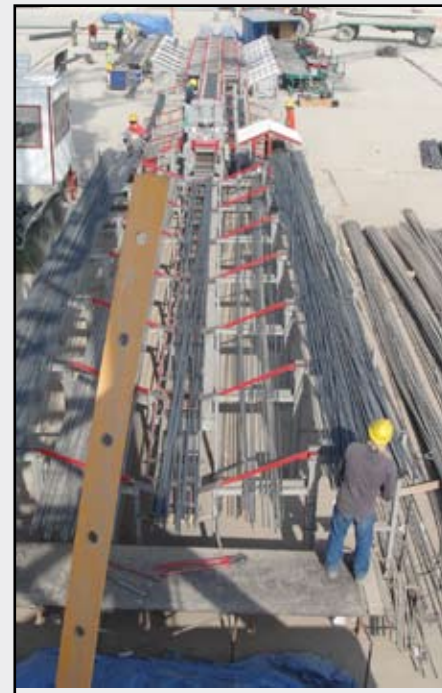
"We are very impressed with KRB equipment," says Vincent Cussac, Steel Service Manager for Saudi Oger. "We like KRB because it is very robust, it cuts many bars very quickly and we are able to produce 100+ tons per shift very easily."

Vincent explains, "We used to cut and bend the steel for projects with more manual table benders and cutters. We would have twenty machines with two to three men per machine. Our maximum output was about 80 tons per shift."

"With our KRB shearline, we have been able to reduce our man hours by half and we easily produce 100+ tons per shift per line. Recently we did 118 tons and that is fairly typical."

When asked what Vincent likes best about KRB equipment he responds, "KRB is very robust, it is easy to use, and takes a beating in a very harsh outdoor environment."

"We are also very impressed with KRB service after the sale. If we have questions the service team has been excellent in supporting us. I would recommend KRB equipment to other steel fabricators."



KRB Standard Shearline.

All City Industries Expands with KRB Equipment

All City Industries, Inc., located in New York, is a growing supplier of Reinforcing Steel, Wire Mesh and Accessories
www.allcityind.com.

The companies principals are big thinkers who started out small. Frank Alfiero, President and Joe Masini, Vice President saw an opportunity to make money in the steel fabricating business.

"Frank and I started the business selling steel bundles," says Masini. "From there we took the money we made and bought our own truck to make our own deliveries to better control the service to our customers."

"We then started offering fabricated steel, and outsourced the cut and bend," explains Alfiero.

"We didn't have control of the delivery schedule and had to pay a premium on the fabricated steel. We decided to bring the fabrication in house using small manual cutters and table benders. Now we could control the fabrication schedule and delivery better,"



KRB Shearline at All City Industries in New York.

says Masini.

However using a simple cutter and bender made it difficult to produce much. "We were only getting 2-3 tons output per shift." Alfiero states. "We manually pushed the bars and could only cut and bend a few bars at a time."

"Frank and I had both worked in the industry and knew of KRB's reputation as the Mercedes of Shearline equipment. We didn't even look at other equipment we knew we wanted KRB," explains Masini.

"The decision was easy. The quality of the equipment is very robust and heavy duty. It is easy to use and the service before, during and after the sale is excellent," declares Masini.

"The modular design has made it possible for us to add equipment as our business expands."

"We have grown steadily since we went into business, and we are planning to expand our operation into a new 25,000 sq. ft. facility next month."

"We need to make room for more KRB equipment!" quips Alfiero.

To find out more about KRB legendary shearlines, visit www.krbmachinery.com.



KRB #18 Table Bender at All City Industries in New York.